

Report No.: CTT13011720EN

Date: Jan. 18, 2013

Page 1 of 5

Client: CHOON'S DESIGN LLC.

Address: 44926 PLAINE DRIVE, NOVI, MI 48377

The following merchandise was (were) submitted and identified by client as:

**Sample Name:** Rainbow loom rubber band

**Sample Model:** glowwhite2013Jan

**Labelled Age Group:** above8

**Country of Origin:** China

**Sample Received Date:** Jan. 16, 2013

**Completed Date:** Jan. 18, 2013

**Test Result(s):** Please refer to next page(s).

**Conclusion(s):**

1. The test result of the submitted sample **MEETS** requirements on the total lead (Pb) in jewelry: California Assembly Bill No. 1681 CHAPTER 415, article 10.1.1 (commencing with Section 25214.1) to Chapter 6.5 of Division 20 of the Health and Safety Code, relating to toxic substances.
2. The test result of the submitted sample **MEETS** requirements on the total cadmium (Cd) in covered product: California Proposition 65, Alameda Superior Court, RG-10-514803.
3. The test result of the submitted sample **MEETS** requirements on Phthalates as stipulated in US Public Law 110-314 [Consumer Product Safety Improvement Act of 2008(CPSIA)].
4. The test result of the submitted sample **MEETS** Total Lead content in substrate material requirement of ASTM F963-11 "Standard consumer safety specification for toy safety," Section 4.3.5.2.
5. The test result of the submitted sample **MEETS** Soluble Heavy Metals content in substrate material requirements of ASTM F963-11 "Standard consumer safety specification for toy safety," Section 4.3.5.2.

Signed for and on Behalf of CTT



Hill Lee / Technical Manager

Consumer Testing Technology Co., Ltd.

# Test Report

Report No.: CTT13011720EN

Date: Jan. 18, 2013

Page 2 of 5

**Test Result(s):**

California Assembly Bill No. 1681 - Lead containing jewelry

Method:

Metal - US CPSC 2/3/2005

Nonmetal - EPA 3051(modified) or EPA 3052(modified)

Surface coating - With reference to ASTM E1645, was analyzed by flame atomic absorption spectrometry (AAS) or Inductively Coupled Plasma Atomic Emission Spectrometer (ICP-AES).

Material No.	Description	Location	Class	Limit (mg/kg)	Result (mg/kg)	Conclusion
1	Beige rubber	Body	2	200	N.D.	PASS

- Note:**
1. mg/kg = milligram per kilogram (ppm).
  2. N.D. = Not Detected (< RL).
  3. RL (Report Limit) = 10mg/kg.
  4. Class 1 = Exempted materials as stainless or surgical steel, precious metal, pearl, glass#, crystal#, ceramic, CZ and other precious or semi-precious stones.
  5. Class 2 = Electroplated metal, unplated metal, plastic rubber, PVC, dye or surface coating.
  6. Class 3 = Other component that is not a Class 1 and Class 2 component.
  7. “#” = For children jewelry, glass or crystal decorative component weight in total no more than 1.0 gram per article. If more than 1.0 gram, it should be tested, and the limit is not more than 200 mg/kg.

CP 65, Alameda Superior Court, RG-10-514803 - Cadmium (Cd) content in covered product

Method:

Metal - EPA 3050B (modified)

Nonmetal - EPA 3051(modified) or EPA 3052(modified)

Surface coating - With reference to ASTM E1645, was analyzed by flame atomic absorption spectrometry (AAS) or Inductively Coupled Plasma Atomic Emission Spectrometer (ICP-AES).

Material No.	Description	Location	Limit (mg/kg)	Result (mg/kg)	Conclusion
1	Beige rubber	Body	300	N.D.	PASS

This test report is issued by the company subject to its General Conditions of Services printed overleaf or available on request and accessible at [www.cttlab.com](http://www.cttlab.com). Attention is drawn to the limitations of liability, indemnification and jurisdictional issues defined therein. Unless otherwise stated the results shown in this report refer only to the sample(s) tested. Without prior written permission of the company, this test report cannot be reproduced, except in full



# Test Report

Report No.: CTT13011720EN

Date: Jan. 18, 2013

Page 3 of 5

- Note:**
1. mg/kg = milligram per kilogram (ppm).
  2. N.D. = Not Detected (< RL).
  3. RL (Report Limit) = 2mg/kg.
  4. Covered Product means the following ornaments worn by a person:
    - a) an anklet, arm cuff, bracelet, charm, brooch, chain, crown, cuff link, watch (excluding the timepiece itself if removable), decorated hair accessory, earring, necklace, pin, ring; similar clothing or shoe ornaments which are detachable; and body piercing jewelry.
    - b) any bead, chain, link, pendant, or other component of such an ornament.

**Test Result(s):**

Phthalates - CPSIA

Method: CPSC-CH-C1001-09.3, was analyzed by Gas Chromatograph-Mass Spectrometer (GC-MS).

Material No.	Description	Location
1	Beige rubber	Body

Substances	DBP	BBP	DEHP	DINP	DNOP	DIDP	Conclusion
CAS No.	84-74-2	85-68-7	117-81-7	28553-12-0	117-84-0	26761-40-0	
Limit (mg/kg)	1000	1000	1000	1000	1000	1000	
RL (mg/kg)	30	30	30	50	30	50	
Material No.	Result (mg/kg)						
1	N.D.	N.D.	N.D.	N.D.	N.D.	N.D.	PASS

- Note:**
1. mg/kg = milligram per kilogram (ppm).
  2. N.D. = Not Detected (< RL).
  3. RL = Report Limit.
  4. Children's toys and child care articles shall not exceed more than 1000mg/kg DBP, BBP or DEHP.
    - Children's toys defined as 12 years and under.
    - Child care articles to facilitate sleep or feeding of children 3 years and under, or to help children with sucking and teething.
  5. Children's toy that can be placed in the mouth and child care articles shall not exceed more than 1000mg/kg DINP, DNOP or DIDP.
    - Toys that can be kept in the mouth by a child so that it can be sucked or chewed.
    - Toys or part of toy with one dimension less than 5cm.

This test report is issued by the company subject to its General Conditions of Services printed overleaf or available on request and accessible at [www.cttlab.com](http://www.cttlab.com). Attention is drawn to the limitations of liability, indemnification and jurisdictional issues defined therein. Unless otherwise stated the results shown in this report refer only to the sample(s) tested. Without prior written permission of the company, this test report cannot be reproduced, except in full



# Test Report

Report No.: CTT13011720EN

Date: Jan. 18, 2013

Page 4 of 5

**Test Result(s):**

Total Lead content in substrate material

Method: ASTM F963-11 Section 4.3.5.2 & ASTM F963-11 Section 8.3.1, was analyzed by flame atomic absorption spectrometry (AAS) or Inductively Coupled Plasma Atomic Emission Spectrometer (ICP-AES).

Material No.	Description	Location	Limit (mg/kg)	Result (mg/kg)	Conclusion
1	Beige rubber	Body	100	N.D.	PASS

- Note:**
1. mg/kg = milligram per kilogram (ppm).
  2. N.D. = Not Detected (< RL).
  3. RL (Report Limit) = 10mg/kg.

Soluble Heavy Metals content in substrate material

Method: ASTM F963-11 Section 4.3.5.2 & ASTM F963-11 Section 8.3.2 to Section 8.3.5, was analyzed by Inductively Coupled Plasma Atomic Emission Spectrometer (ICP-AES).

Material No.	Description	Location
1	Beige rubber	Body

Elements	As	Ba	Cd	Cr	Hg	Pb	Sb	Se	Conclusion
Limit (mg/kg)	25	1000	75	60	60	90	60	500	
RL(mg/kg)	2.5	5	5	5	5	5	5	5	
Material No.	Result (mg/kg)								PASS
1	N.D.	N.D.	N.D.	N.D.	N.D.	N.D.	N.D.	N.D.	

- Note:**
1. mg/kg = milligram per kilogram (ppm).
  2. N.D. = Not Detected (< RL).
  3. RL = Report Limit.

**Remark:**

CTT Co., Ltd. is the US Consumer Product Safety Commission (CPSC) Accredited Third Party Testing Laboratory, Identification number is 1026. And shall refer to <http://www.cpsc.gov/cgi-bin/labapplist.aspx>.



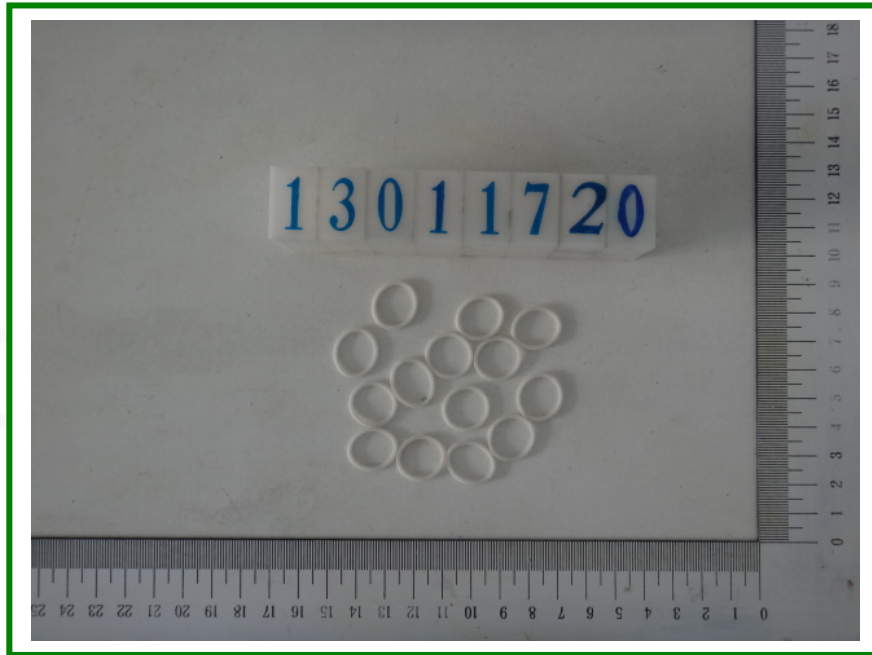
# Test Report

Report No.: CTT13011720EN

Date: Jan. 18, 2013

Page 5 of 5

Photo of Sample:



\*\*\*End of Report\*\*\*

This test report is issued by the company subject to its General Conditions of Services printed overleaf or available on request and accessible at [www.cttlab.com](http://www.cttlab.com). Attention is drawn to the limitations of liability, indemnification and jurisdictional issues defined therein. Unless otherwise stated the results shown in this report refer only to the sample(s) tested. Without prior written permission of the company, this test report cannot be reproduced, except in full